

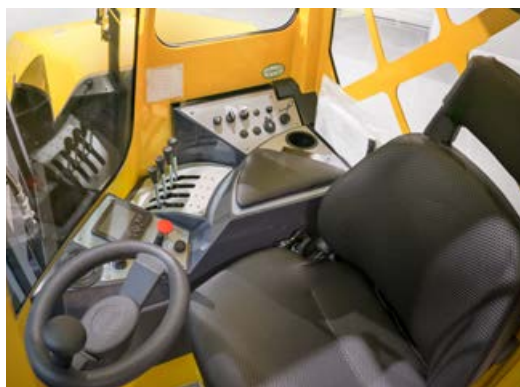
# **C-SERIES**

## **C5000XL - Diesel**

The multi-directional forklift designed for the safe, space saving and productive handling of long and bulky loads.

# **COMBiLiFT**

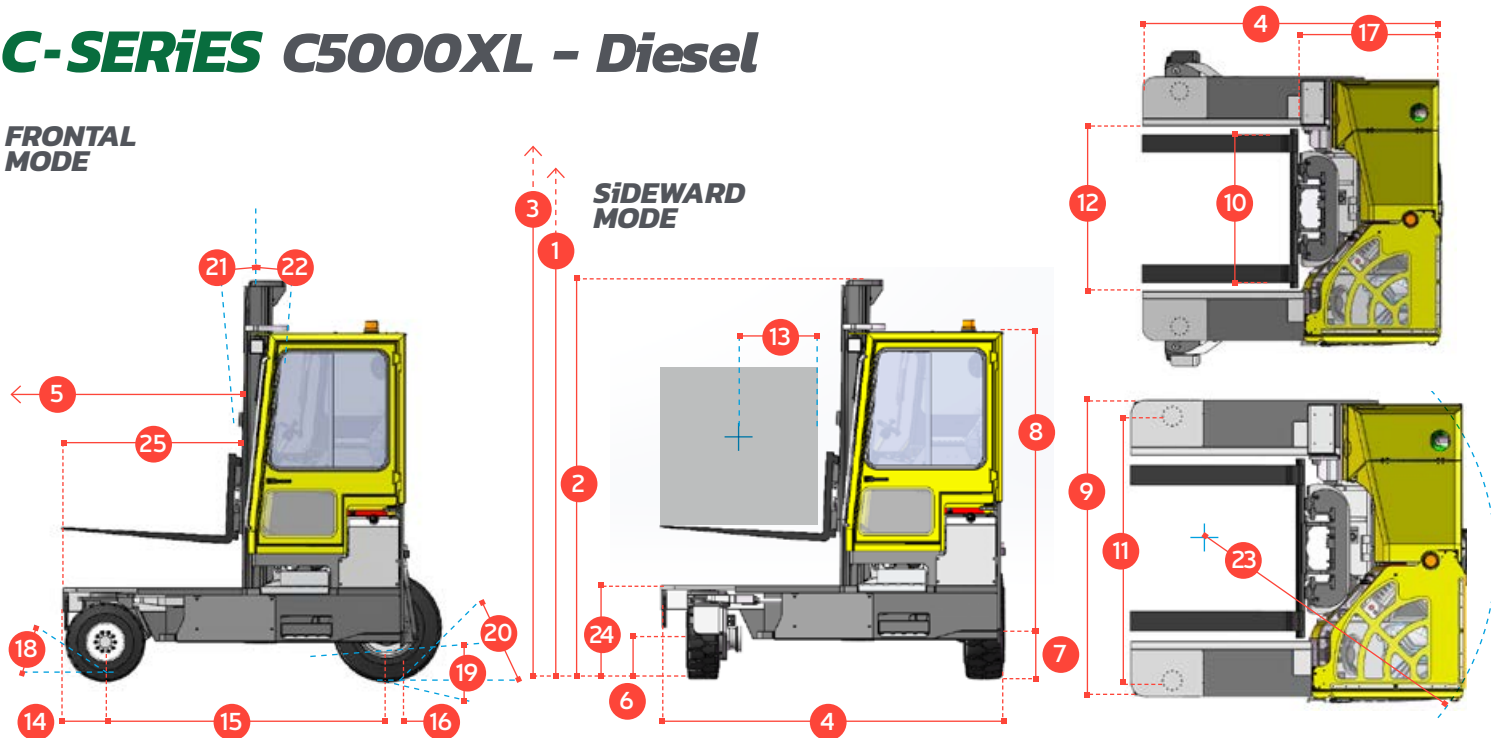
**LiFTING INNOVATION**



# C-SERIES C5000XL - Diesel

## FRONTAL MODE

## SIDEWARD MODE

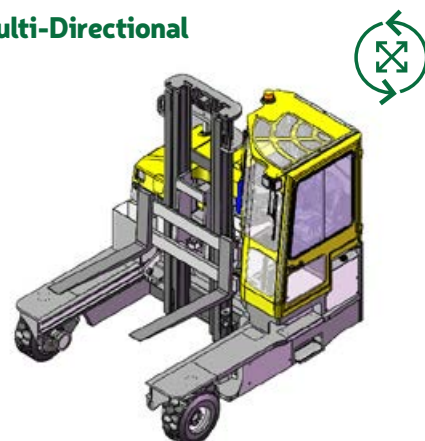


REF.	DESCRIPTION	C5000XL
1a	Standard Lift Height	4040 mm
1b	Free Lift Height	0 mm
2	Height Mast Closed	2990 mm
3	Max. (Mast Raised)	5005 mm
4	Overall Length	2500 mm
5	Mast Travel	1340 mm
6	Ground Clearance Under Mast	265 mm
7	Ground Clearance to Wheelbase Centre	300 mm
8	Height Over Cab or of Overhead Guard	2540 mm
9	Width	2230 mm
10	Outside Spread of Fork Arms	1350 mm
11	Track Front	2000 mm
12	Frame Opening	1400 mm
13	Load Centre Distance	600 mm
14	Overhang Front	310 mm
15	Wheel Base	2070 mm
16	Overhang Back	120 mm
17	Length from Face of Fork	1300 mm
18	Approach Angle	45°
19	Ramp Angle	29°
20	Departure Angle	45°
21	Forward Tilt	3°
22	Backward Tilt	5°
23	Minimum Outside Radius	2450 mm
24	Platform Height	680 mm
25	Platform Length	1200 mm

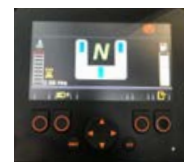
A	Capacity	5000 kg
B	Unladen Weight	7140 kg
C	Maximum Ground Speed	15 km/h
D	Gradeability	15%
E	Kubota V2403TE Stage V Electrics	48.6 kW
F	Fork Sections 50mm x 150mm	12 Volt
G	23 x 10 - 12 Front Tyre	1200 mm
H	355/65- 15 Rear Tyre	OD580 mm / Width 240 mm
I	Standard Colour	OD 800 mm / Width 295 mm
J	Suspension Seat	Green and Grey
K		KAB Model 116

## Multi-Directional



## Features Include:

- Rubber Mounted Cabin
- Multi-Directional Operation
- 3 Wheel Hydrostatic Drive
- Load Sensing Steering
- 4 Way Lever Positioning of Wheels
- Hydraulic Oil Cooler
- Wheel Position Display



## Distributed by:

European Patent No. 2167416; Brazilian Patent No. P10811954-6;  
Australian Patent No. 2008253242 UK Patent No. 1803601.2

COMBILIFT HAS A POLICY OF CONTINUOUS PRODUCT DEVELOPMENT AND RESERVES THE RIGHT TO ALTER SPECIFICATIONS WITHOUT PRIOR NOTICE. SPECIFICATIONS AND/OR DIMENSIONS MAY VARY FROM THOSE ILLUSTRATED IN SOME COUNTRIES.